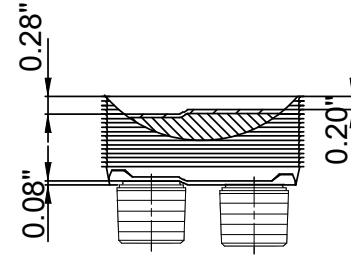
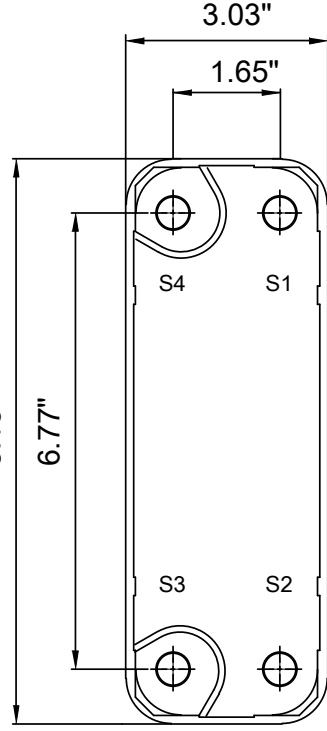
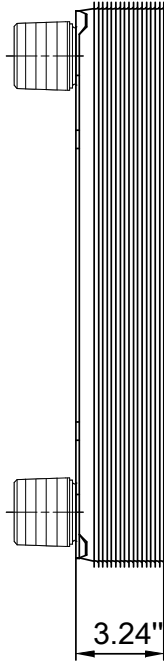
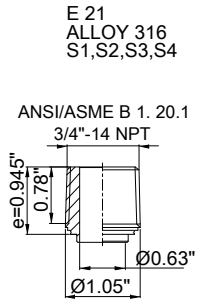


Note that all unique customer requirements (i.e tolerance) need to be verified thru Alfa Laval.



HEATING SURFACE ft<sup>2</sup>  
NETWEIGHT 5.7 lb  
OPERATING WEIGHT lb  
PLATE MATERIAL ALLOY 316  
PLATE GROUPING 1\*14H/1\*15H

Frameplate is depressed 0.08 inches at connection S3/S4  
Pressureplate is depressed 0.08 inches / even number of channel plates  
at connections T3/T4 / uneven number of channel plates at connections T1/T2.  
T1 T2 T3 T4 locations on back side correspond to S1 S2 S3 S4 on front side

ALL DIMENSIONS IN INCHES

SIDE	MEDIA	INLET	TEMP.	OUTLET	TEMP.	FLOW RATE	PRESSURE DROP	LIQUID VOL.
1	Water	S1	°F	S2	°F	lb/h	psi	0.01 ft <sup>3</sup>
2	Water	S3	°F	S4	°F	lb/h	psi	0.01 ft <sup>3</sup>

PRESSURE VESSEL APPROVAL PED/CRN  
AlfaNova 14-30H (3287050862)



www.alfalaval.com

CUSTOMER NAME / REF. NO.  COMPANY / REF. Alfa Laval Nordic AB Alfa Laval Inc.	TOTAL LENGTH 4.2 in TOTAL WIDTH 3.0 in TOTAL HEIGHT 8.1 in	8/25/2021 REV 0